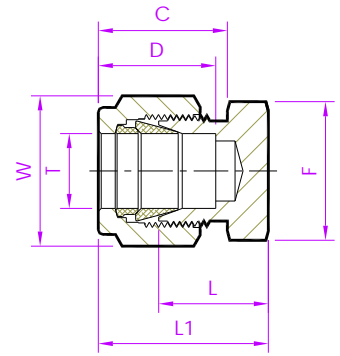


- Tube Fitting (Double Ferrule)-
Tube Ends

Tube Cap



Metric Tube

TubeFit Part No.	Equivalent Part No. Type 1	Equivalent Part No. Type 2	TUBE OD Ø T	D	C	L	L1	Body Hex F	Nut Hex W
Dimensions in Millimetres									
2M - TCD	- 2MO - C	BLENM2	2	12.9	15.3	13.5	20.1	11.1	11.1
3M - TCD	- 3MO - C	BLENM3	3	12.9	15.3	13.5	20.1	11.1	11.1
4M - TCD	- 4MO - C	BLENM4	4	13.7	16.1	14.7	21.3	11.1	11.1
6M - TCD	- 6MO - C	BLENM6	6	15.3	17.7	15.7	23.1	14.2	14.2
8M - TCD	- 8MO - C	BLENM8	8	16.2	18.6	17.0	24.5	16	16
10M - TCD	- 10MO - C	BLENM10	10	17.2	19.5	19.0	26.6	19	19
12M - TCD	- 12MO - C	BLENM12	12	22.8	22.0	19.0	29.1	22.2	22.2
14M - TCD	- 14MO - C	BLENM14	14	24.4	22.0	19.8	29.9	25.4	25.4
15M - TCD	- 15MO - C	BLENM15	15	24.4	22.0	19.8	29.9	25.4	25.4
16M - TCD	- 16MO - C	BLENM16	16	24.4	22.0	19.8	29.9	25.4	25.4
18M - TCD	- 18MO - C	BLENM18	18	24.4	22.0	21.3	31.4	27	30
20M - TCD	- 20MO - C	BLENM20	20	26.0	22.0	23.9	34.0	30	32
22M - TCD	- 22MO - C	BLENM22	22	26.0	22.0	23.9	34.0	30	32
25M - TCD	- 25MO - C	BLENM25	25	31.3	26.5	26.2	38.5	35	38

NOTE: 1) Dimension L1, C, D is shown in the finger-tight position. 2) Dimensions are for reference only and are subject to change.

- ALL PART NUMBERS ARE PROPRIETARY OF THEIR RESPECTIVE OWNERS. -