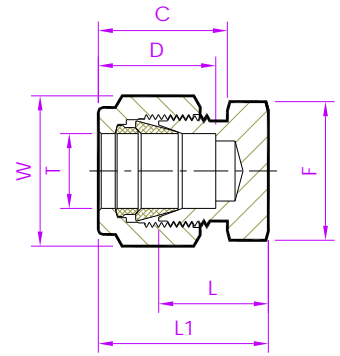


**- Tube Fitting (Double Ferrule)-
Tube Ends**

Tube Cap



Fractional Tube

Tubefit Part No.	Equivalent Part No. Type 1	Equivalent Part No. Type 2	TUBE OD Ø T	D	C	L	L1	Body Hex F	Nut Hex W
Dimensions in Inches									
1 - TCD	- 100 - C	1BLEN1	1/16	0.34	0.43	0.39	0.59	7/16	5/16
2 - TCD	- 200 - C	2BLEN2	1/8	0.50	0.60	0.53	0.79	7/16	7/16
3 - TCD	- 300 - C	3BLEN3	3/16	0.54	0.63	0.58	0.84	7/16	1/2
4 - TCD	- 400 - C	4BLEN4	1/4	0.60	0.70	0.63	0.92	9/16	9/16
5 - TCD	- 500 - C	5BLEN5	5/16	0.64	0.73	0.67	0.96	5/8	5/8
6 - TCD	- 600 - C	6BLEN6	3/8	0.66	0.76	0.72	1.01	11/16	11/16
8 - TCD	- 810 - C	8BLEN8	1/2	0.90	0.86	0.75	1.15	7/8	7/8
10 - TCD	- 1010 - C	10BLEN10	5/8	0.96	0.86	0.78	1.18	1	1
12 - TCD	- 1210 - C	12BLEN12	3/4	0.96	0.86	0.84	1.24	1.1/16	1.1/8
14 - TCD	- 1410 - C	14BLEN14	7/8	1.02	0.86	0.94	1.34	1.3/8	1.1/4
16 - TCD	- 1610 - C	16BLEN16	1	1.23	1.04	1.03	1.51	1.3/8	1.1/2

NOTE: 1)Dimension L1, C, D is shown in the finger-tight position. 2)Dimensions are for reference only and are subject to change.

- ALL PART NUMBERS ARE PROPRIETARY OF THEIR RESPECTIVE OWNERS. -