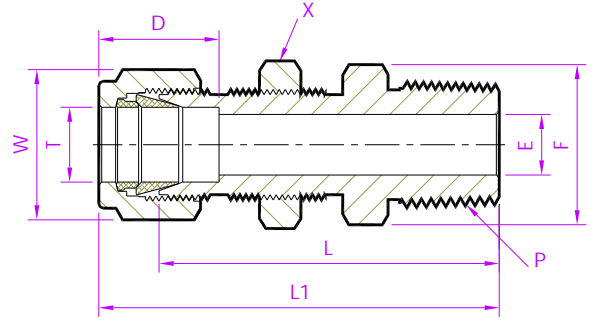


- Tube Fitting (Double Ferrule)-
Tube To Male Pipe Thread



Bulkhead Male Connector

Metric Tube x NPT (M)

TubeFit Part No.	Equivalent Part No. Type 1	Equivalent Part No. Type 2	TUBE OD Ø T	NPT Male Pipe Size P	ØE	D	L	L1	Body Hex F	Nut Hex W	P.Nut Hex X
			(mm)	(Inch)	Dimensions in Millimetres						
6M - BMCD - 2N	- 6MO - 11 - 2	M6MBC1/8N	6	1/8	4.8	15.3	42.2	49.6	14.2	14.2	16
6M - BMCD - 4N	- 6MO - 11 - 4	M6MBC1/4N		1/4			46.2	53.6			
8M - BMCD - 2N	- 8MO - 11 - 2	M8MBC1/8N	8	1/8	4.8	16.2	44.8	52.3	16	16	19
8M - BMCD - 4N	- 8MO - 11 - 4	M8MBC1/4N		1/4			50.0	57.5			
10M - BMCD - 4N	- 10MO - 11 - 4	M10MBC1/4N	10	1/4	7.9	17.2	50.8	58.4	19	19	22.2
10M - BMCD - 6N	- 10MO - 11 - 6	M10MBC3/8N		3/8			50.8	58.4			
10M - BMCD - 8N	- 10MO - 11 - 8	M10MBC1/2N		1/2			55.5	63.1			
12M - BMCD - 4N	- 12MO - 11 - 4	M12MBC1/4N	12	1/4	7.1	22.8	53.2	63.3	22.2	22.2	25
12M - BMCD - 6N	- 12MO - 11 - 6	M12MBC3/8N		3/8			54.4	64.5			
12M - BMCD - 8N	- 12MO - 11 - 8	M12MBC1/2N		1/2			58.7	68.8			

- For Lock Nut used 'BUND'.

NOTE : 1)The E Dimension is the minimum opening & Fittings of this group may be back drilling to larger ID at pipe thread or straight thread end.
2)Dimension L1, D is shown in the finger-tight position. 3)Dimensions are for reference only and are subject to change 4)NPT thread as per ANSI B 1.20.1.

- ALL PART NUMBERS ARE PROPRIETARY OF THEIR RESPECTIVE OWNERS. -